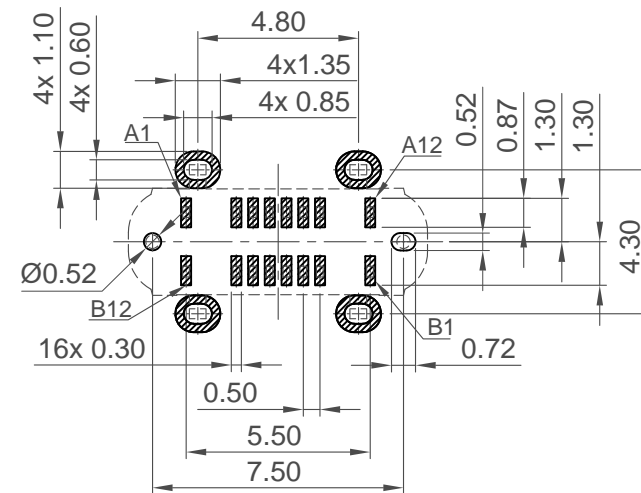
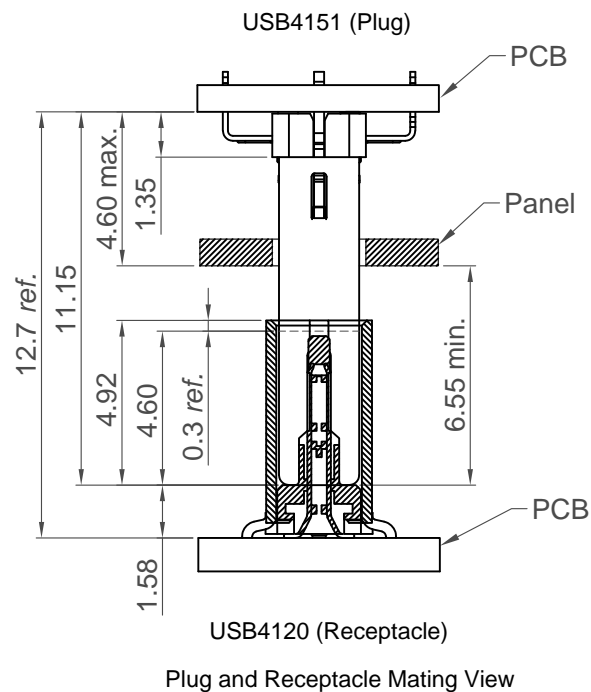


Cap Information







**Recommended PCB Layout**

Thickness  $1.00 \pm 0.10\text{mm}$

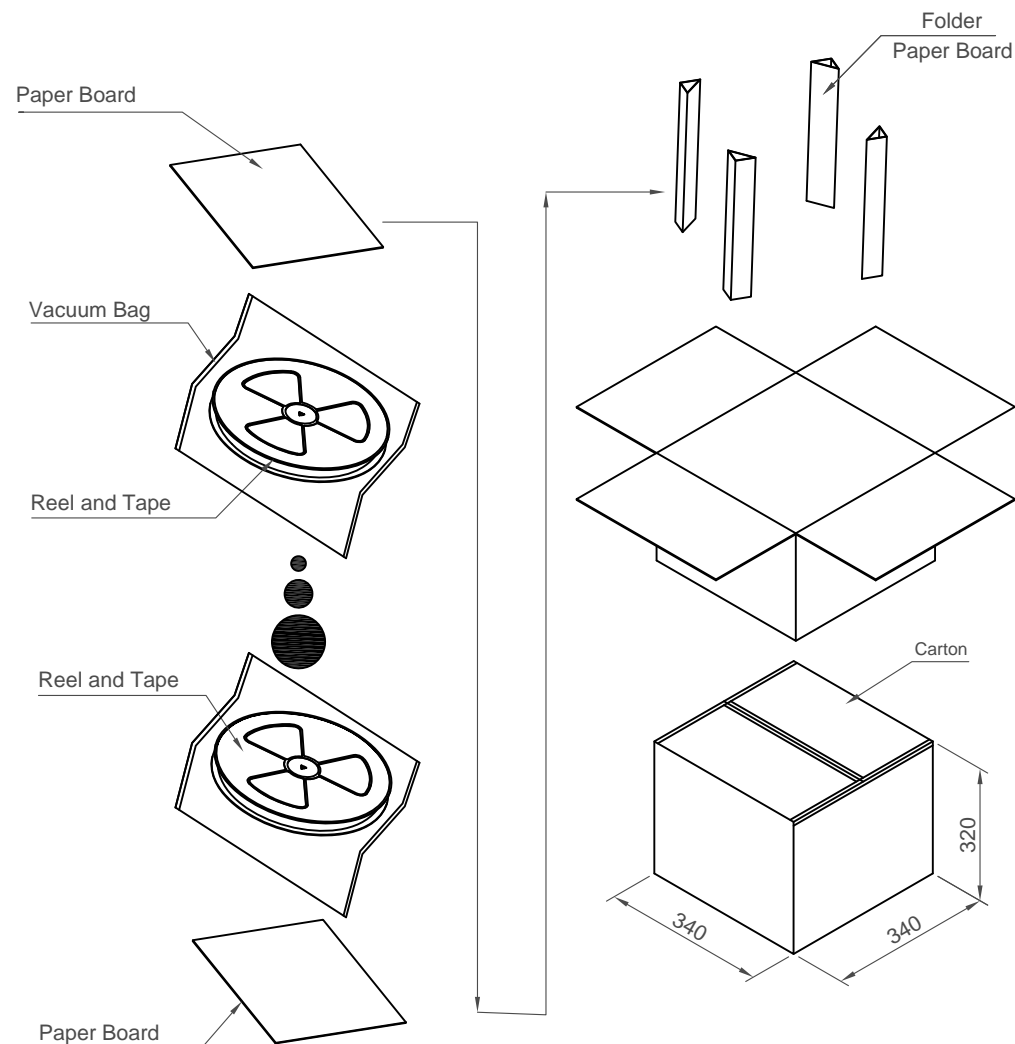
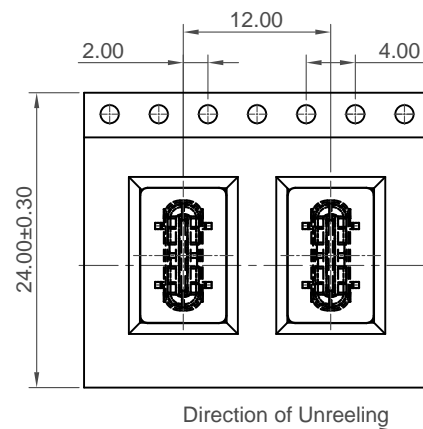
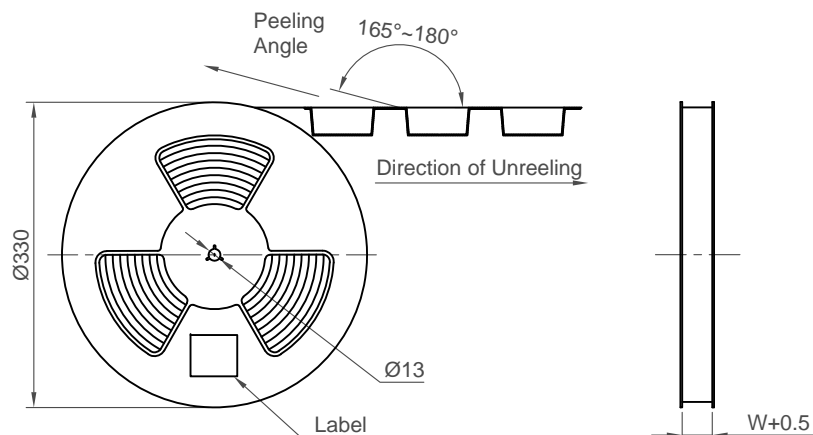
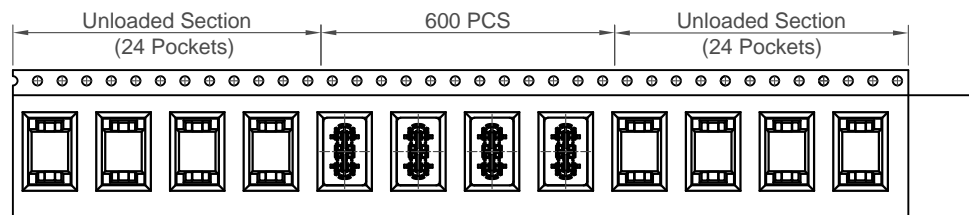
Tolerance:  $\pm 0.05\text{mm}$

■ Solder Area □ Component Outline

Pin	Signal	Mating Sequence	Pin	Signal	Mating Sequence
A1	GND	First	B12	GND	First
A4	Vbus	First	B9	Vbus	First
A5	CC1	Second	B8	SBU2	Second
A6	Dp1	Second	B7	Dn2	Second
A7	Dn1	Second	B6	Dp2	Second
A8	SBU1	Second	B5	CC2	Second
A9	Vbus	First	B4	Vbus	First
A12	GND	First	B1	GND	First
SHELL	GND		SHELL	GND	

Part Number			Product Description			<div> www.gct.co</div>		
USB4120			USB 2.0 Type C Receptacle, Vertical, SMT, H=6.5mm					
Drawing Date								
28th September 2020								
By	CC	Tolerances (Except as Noted)		Units:	<div></div> <div> This drawing is confidential and copyright of Global Connector Technology, Ltd (GCT). This drawing must not be copied or disclosed without written consent. E &amp; OE</div>	<div>Not to Scale</div> <div>Drawn By</div> <div>CC</div> <div>Sheet No.</div> <div>2/3</div>		
Detail	Drawing Release	Length	Angle	Metric (mm)				
Revision	A	X.X ± 0.30		<div></div> 3rd Angle Projection				
Date	28/09/20	X.XX ± 0.25	-					
		X.XXX ± 0.10						

**GCT**  
www.gct.co



Pcs / Reel	Reels / Carton	Total Quantity
600	10	6,000 pcs

Part Number USB4120		Product Description USB 2.0 Type C Receptacle, Vertical, SMT, H=6.5mm	
Drawing Date 28th September 2020			
By CC	Drawing Release	Tolerances (Except as Noted)	Units: Metric (mm)
Detail	Release	Length X.X ± 0.30	 
Revision A		Angle X.XX ± 0.25	
Date 28/09/20		X.XXX ± 0.10	

© This drawing is confidential and copyright of Global Connector Technology, Ltd (GCT). This drawing must not be copied or disclosed without written consent. E & OE

**GCT**  
www.gct.co

Not to Scale      Drawn By CC      Sheet No. 3/3